



Consumer Bulletin

Pride In Excellence Since 1921

WesternExterminator.com

Number 3

Western Subterranean Termites (*Reticulitermes Hesperus*)



Termites can munch into your life savings

MUNCHING MACHINES

DON'T LET THEM MUNCH YOU OUT OF HOUSE OR HOME!

Termites are beneficial to our ecosystem and play a crucial role in degrading wood and other organic materials with cellulose components. But these tiny creatures are an adversary to our homes, monuments, and historic places that are constructed with wood components.

These munching machines cause more damage than fires, storms, and earthquakes combined. If left undetected, termites will munch their way between studs, floor joists, rafters etc. before the damage is externally visible.

TERMITES: UNVITED GUESTS - HOW DID THEY GET TO MY HOUSE

Three key factors that attract termites toward a structure include FOOD, TEMPERATURE, and MOISTURE. Generally, termites use the thermal shadow cast by vegetation and houses to seek cooler areas for foraging activity. Termites will feed on wood, paper, cardboard and plant debris including living and dead tissues. Termites are susceptible to moisture loss and they overcome this obstacle by *building shelter tubes*.

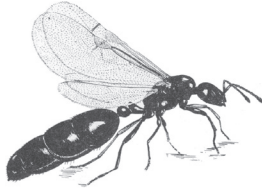
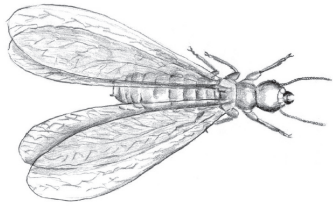
THE KEY STEP FOR EARLY DETECTION OF TERMITE ACTIVITY

Regular Inspection - Western Exterminator Company has qualified Termite Inspectors who are licensed and trained to detect termites, wood boring beetles, and fungal damage. Typical inspection procedures include inspecting the exterior and interior crawl space and attic for any wood destroying organism or the evidence of their activity. *Regular inspections for termite activity can give you peace of mind by finding termites before they do much damage to your home.* We recommend homes be inspected every three years.



UP CLOSE - A LOOK AT THE TERMITE WORLD

Termite colonies primarily consist of three castes: Workers, Soldiers, and Reproductives. Worker termites are small creamy white wingless insects that perform numerous tasks within the colony. Some of the important tasks performed by the workers include finding food sources, taking care of young termites, repairing galleries, and aiding the soldiers to defend the colony. Soldier termites defend the colony against ants and other predators. The reproductive caste consists of queen, king (primary reproductives), and secondary reproductives. At certain times of the year, a colony will produce winged termites called **SWARMERS**. In the Western U.S., emergences of swarmer correspond with spring rainy seasons (Feb. - May) and that's when you see winged termites around window-sills or inside homes.



ARE THEY TERMITES OR ANTS?

Termites – Wings similar in size and shape, antennae straight, body broad at middle section.

Ants – size and shape of wings different, antennae elbowed, body constricted at middle section.

Our Entomologists can also help you with accurate insect identification. Just collect the sample and have your Service Technician return it to our office. We will contact you within a few days with an insect ID.

HOW CAN I TELL IF I HAVE TERMITE INFESTATIONS?

Look for the evidence of SHELTER TUBES or signs of WINGED TERMITES. Shelter Tubes are made of soil particles and are about 1/4 inch in width.

HOW LONG WILL IT TAKE BEFORE I SEE WINGED TERMITES?

Colony growth is slow at first and it will take a few years (3 to 4 years) before you see winged termites. Again, regular inspection will help you detect termites before they start munching away your valuable investment.

HOW LARGE IS A COLONY?

The size of a colony can range from a few hundred thousand to a few million termites. Foraging territory can extend up to hundreds of feet and multiple termite colonies can be present in a location and infesting the structure.

HOW MUCH WOOD DO THEY EAT?

A mature colony with 60,000 termites can consume about 5-grams/0.2 oz of wood per day. For a population of this size, it would take a year to consume 2.33 linear feet of 2" X 4" pine wood.



Shelter Tubes

CONTROL

If subterranean termites are found attacking your home they won't leave on their own. In most cases, there will actually be multiple termite colonies on your property.

Western Exterminator Company uses two different methods to control or eliminate subterranean termites.

One method uses a liquid pest control material injected underneath your home into the soil next to the foundation walls. While this material lasts, it protects that specific part of your home from termite entry.

Western also installs and services the Sentricon Total Colony Elimination System. Sentricon stations are placed in the soil around your home. When termites find the monitoring device in our stations they recruit other termites to feed. Our Technician verifies the presence of termites in the station, and the monitoring device is replaced with a Baitube containing an insect growth regulator. This bait stops the molting process so termites can't grow. Over time the entire colony is eliminated. If this system is maintained on the property, it will continue to intercept new termite colonies, and eliminate them as well.

Here's why most homeowners prefer the Sentricon System: proven termite colony elimination, as shown by independent university and third party research and successful real life use. Protection is easy on the environment, and designed with your family in mind. Sentricon is less disruptive to your home and lifestyle - no drilling, trenching or scheduling hassles. Most importantly, you have increased security for your home, your greatest investment.

Pari Pachamuthu, Ph.D.
Urban Entomologist/Technical Trainer
Western Exterminator Company

1-800-WEST-EXT
1-800-937-8398
WesternExterminator.com

WESTERN
EXTERMINATOR COMPANY
Your Local Pest Control Experts
A Rentokil Company



Have a pest problem you'd like answered? Contact Mr. Little at: www.AskMrLittle.com